



# HAESAERTS

## LUXEMBOURG

MEMBER OF ALTREA LOGISTICS

**Zero-emission end-to-end solutions  
via Luxembourg  
with the new technologies**

**Challenges and opportunities**



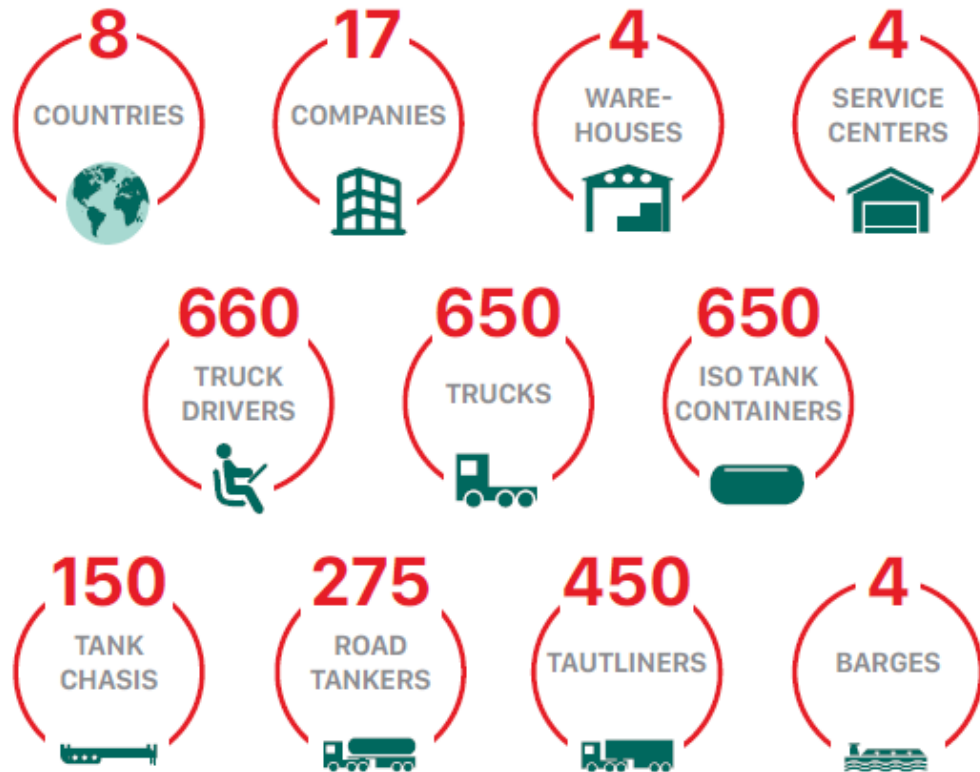
**Energizing Freight  
Transport  
for a Green Future**

**Thursday, 9th November 2023**



# ALTREA

## LOGISTICS GROUP



## OUR BRANDS

|                                  |  |   |
|----------------------------------|--|---|
| <b>ALTREA</b><br>LOGISTICS GROUP | <b>ALTREA INTERNATIONAL TRANSPORT SOLUTIONS</b> <ul style="list-style-type: none"> <li>- High tech steel and non ferro (24/7 supply-chain)</li> <li>- Construction - exceptional transport</li> <li>- A.D.R. waste and A.D.R. dry bulk transport</li> <li>- Dry bulk powders (concrete, construction, steel, glass industry)</li> <li>- Automotive (24/7 supply chain)</li> <li>- General cargo (LTL, FTL)</li> <li>- Liquid chemicals packed (non) hazardous</li> <li>- Road &amp; Intermodal</li> <li>- Distribution LTL, ADR</li> </ul> | <b>ALDERS INT. TRANSPORT</b>                                |
|                                  |  | <b>ALDERS BULK LOGISTICS</b>                                |
|                                  |  | <b>ALTREA CENTRAL EUROPE</b>                                |
|                                  |  | <b>DEPAIRE</b>  |
|                                  | <b>ALTREA BULK &amp; LIQUIDS</b><br>Chemical liquids, gases and waste<br>Road & Intermodal   | <b>HAESAERTS</b>  |
|                                  |  | <b>TRAFICO</b>  |
|                                  | <b>ALOCHEM</b><br>Value added services, including warehousing  | <b>ALOCHEM</b><br><small>MEMBER OF ALTREA LOGISTICS</small> |

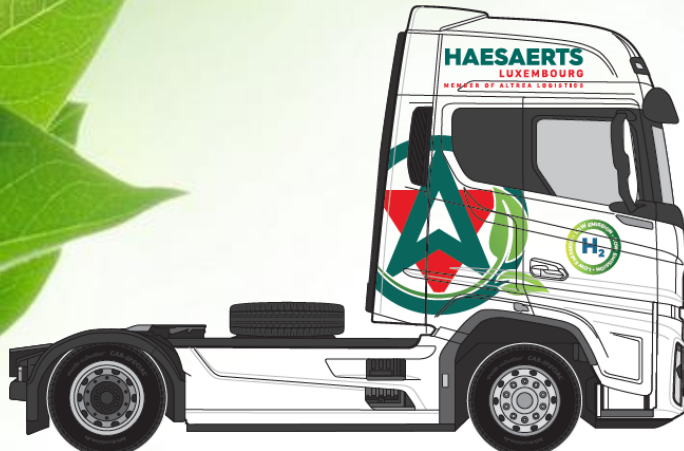


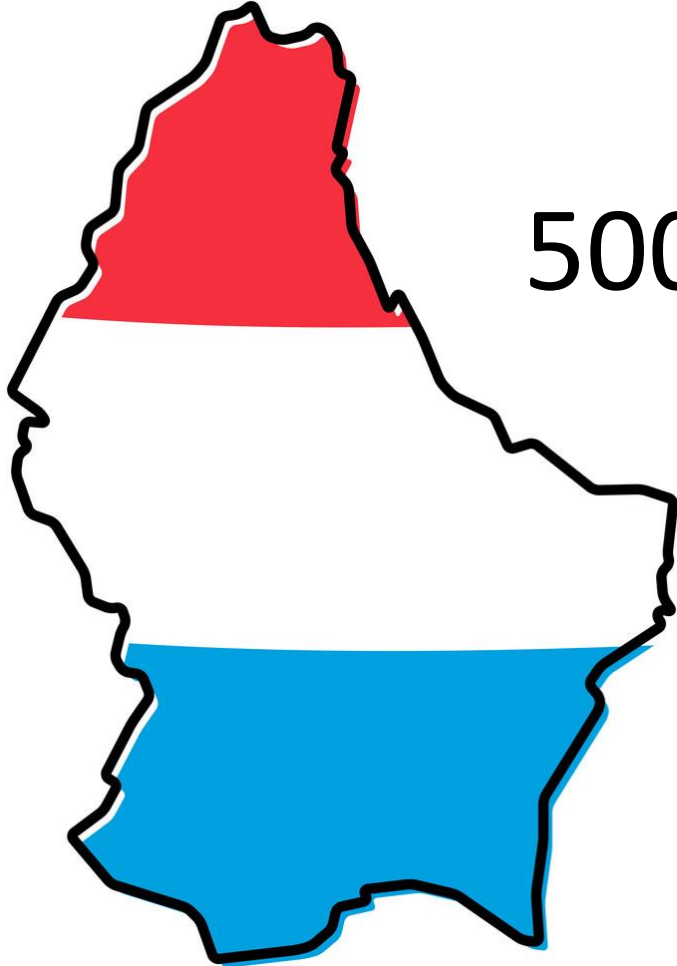
**LUXEMBOURG**

**HAESAERTS FOR HYDROGEN**

# SUSTAINABILITY IN LOGISTICS

→ .... is more than zero emission trucks, trains and ships





500 million consumers around

## LOGISTICS

One of economical the strategies  
of the Grand-Duché Economic Development



# GREEN LOGISTICS in LUXEMBURG



**AIR**



GLOBAL LEADER – 40 cargo Jumbo's  
Shortest distance cargo-plane-cargo handling

**SEA**



More than 200 sea-going vessels

**RAIL**



BETTEMBOURG – 200.000 shipments/year

**WATERWAYS**



INLAND waterways port



**AIR**



**LUX AIRPORT** is shareholder in Norway of SAF producer

**SEA**



**LUXEMBOURG** ship owners can take the lead in AMMONIA-METYHANOL

**RAIL**



**CFL** has a high percentage of electrification  
**BETTEMBOURG TERMINAL** can fuel H2 Locs

**WATERWAYS**



**LUX PORT MERTERT** has the potential for our TRIMODAL ENERGY HUB





# AVAILABLE EXPERTISE IN LUXEMBOURG



HYDROGEN VALLEY PROJECT



COMPOSITE material research



10 years expertise in E-BUS  
preparing expertise in H<sub>2</sub> trucks and transport containers



Pioneering in H<sub>2</sub> combustion engine injection



Expertise in ELECTROLYZERS



Consortium ECOHYDRO with EU Grant



RISK of lack of CONNECTION between LUXEMBOURG based actors  
Fragmentated investments -“1 on 1”governmental support

Miss the momentum to become the regional leader  
in ZERO-emission LOGISTICS

Be the local H2 DISTRIBUTOR in the region



IS THIS OUR FUTURE ?

THANK YOU !

